

Sophos Switch



Sophos Switch Series

The Sophos Switch Series offers a range of cloud-managed, network access layer switches to connect, power, and control device access at the LAN edge. Sophos Central provides a single pane of glass to manage your switches alongside your other Sophos security solutions.

Connectivity, Power, and Control

The Sophos Switch Series offers a range of 8-, 24-, and 48-port network access layer switches to connect and power the devices on your Local Area Network (LAN). Switches put you in control of device access with port security and VLAN segmentation and add Quality of Service at the all-important access layer.

Many Ways to Manage a Switch

Your Sophos switches can be managed in different ways. Use Sophos Central for management and visibility alongside your other Sophos solutions, or open the local Web interface, Command Line Interface or use SNMP for additional configuration options.

Simple Setup and Deployment

Sophos Switches are very easy to setup and deploy. Simply enter the serial number of your switch in Sophos Central and click register to start the process. Your switches will be up and running in minutes.

SMB and SD-Branch Use Cases

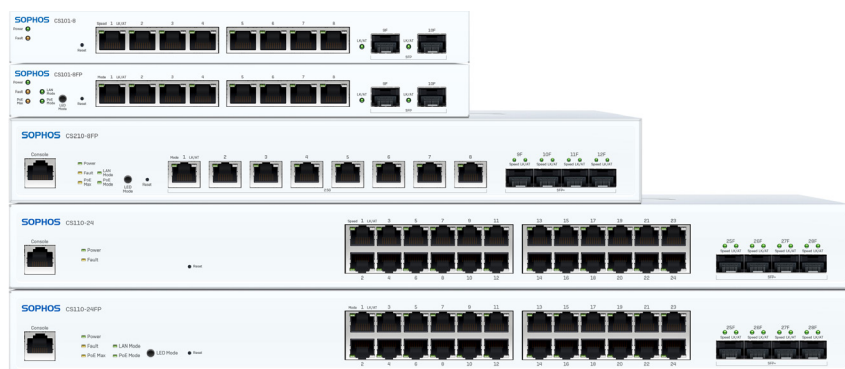
Sophos switches suit the connectivity needs of many organizations: remote and home offices, small and medium-sized businesses, retail outlets and branch offices. Add switches to extend your SD-Branch deployments using our full range of Secure Access products for both LAN and Service Edge access.

One Vendor. One View.

Rather than adding complexity and security risk, Sophos switches seamlessly integrate with your existing Sophos solutions and so remove the risks of multi-vendor deployments. New and existing customers, resellers, and managed service providers benefit from having a single vendor for the full network stack.

Highlights

- ▶ Access layer switches with 8, 24 or 48 1 GE or 2.5 GE ports
- ▶ SFP (1G) or SFP+ (10G) uplink ports on all models
- ▶ Power-over-Ethernet options available to power PoE-capable devices
- ▶ Easy to set up and deploy
- ▶ Multiple management options including Sophos Central
- ▶ Ideal for branch office, retail and SMB use cases
- ▶ A single vendor for the full network stack



Sophos Switch – Model Overview

We offer two different series within our model range:

- 100 Series models offer 1 GE Ethernet ports plus either SFP or SFP+.
- 200 Series models are equipped with 2.5 GE ports plus SFP+.

Each series includes models with 8, 24, and 48 ports.

8-Port Switches

| | 100 Series | | 200 Series |
|---------------------------------|---|---|---|
| Model | CS101-8 | CS101-8FP | CS210-8FP |
| Hardware | | | |
| Form Factor | Desktop | Desktop | 1U |
| Mounting | Wall mount | Wall mount | Rackmount |
| Technical Specifications | | | |
| Switching Capacity [Gbps] | 20 | 20 | 120 |
| MAC Address Table | 8K | 8K | 8K |
| Packet Buffer Memory | 512 KB | 512 KB | 512 KB |
| VLANs | Support for up to 256 VLANs simultaneously (out of 4096 VLAN IDs) | Support for up to 256 VLANs simultaneously (out of 4096 VLAN IDs) | Support for up to 256 VLANs simultaneously (out of 4096 VLAN IDs) |
| Network Interfaces | | | |
| 10/100/1000Base-T | 8 | 8 | - |
| 100/1000Base-T/2500Base-T ** | - | - | 8 |
| SFP 1G | 2 | 2 | 0 |
| SFP+ 1G/10G | 0 | 0 | 4 |
| Other Interfaces | DC-In On/Off Switch | DC-In On/Off Switch | Console Port AC Power Socket |
| Power over Ethernet | | | |
| Power Budget | n/a | 110W | 240W |
| PoE-capable Ports | n/a | 1 to 8 | 1 to 8 |
| Supported PoE Standard | n/a | 802.3af/802.3at | 802.3af/802.3at/802.3bt |
| Max. PoE Devices | n/a | 7 [15.4W]/3 [30W] | 8 [15.4W]/8 [30W]/4 [60W] |

**10M Full and Half Duplex and 100M Half Duplex speeds are not supported on this model

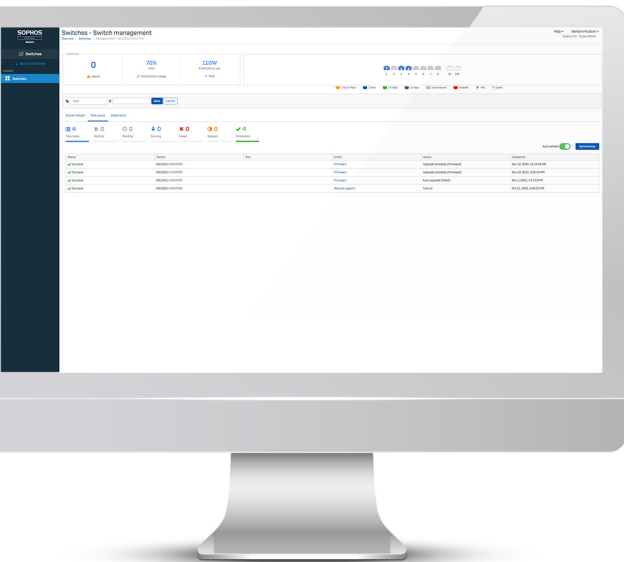
24-Port Switches

| | 100 Series | | 200 Series |
|---------------------------------|---|---|---|
| Model | CS110-24 | CS110-24FP | CS210-24FP |
| Hardware | | | |
| Form Factor | 1U | 1U | 1U |
| Mounting | Rackmount | Rackmount | Rackmount |
| Technical Specifications | | | |
| Switching Capacity [Gbps] | 128 | 128 | 152 |
| MAC Address Table | 16K | 16K | 16K |
| Packet Buffer Memory | 1.5 MB | 1.5 MB | 1.5 MB |
| VLANs | Support for up to 256 VLANs simultaneously (out of 4096 VLAN IDs) | Support for up to 256 VLANs simultaneously (out of 4096 VLAN IDs) | Support for up to 256 VLANs simultaneously (out of 4096 VLAN IDs) |
| Network Interfaces | | | |
| 10/100/1000Base-T | 24 | 24 | 16 |
| 100/1000Base-T/2500Base-T | - | - | 8 |
| SFP 1G | 0 | 0 | 0 |
| SFP+ 1G/10G | 4 | 4 | 4 |
| Other Interfaces | Console Port AC Power Socket | Console Port AC Power Socket | Console Port AC Power Socket |
| Power over Ethernet | | | |
| Power Budget | n/a | 410W | 410W |
| PoE-capable Ports | n/a | 1 to 24 | 1 to 24 |
| Supported PoE Standard | n/a | 802.3af/802.3at | 802.3af/802.3at |
| Max. PoE Devices | n/a | 24 [15.4W]/13 [30W] | 24 [15.4W]/13 [30W] |

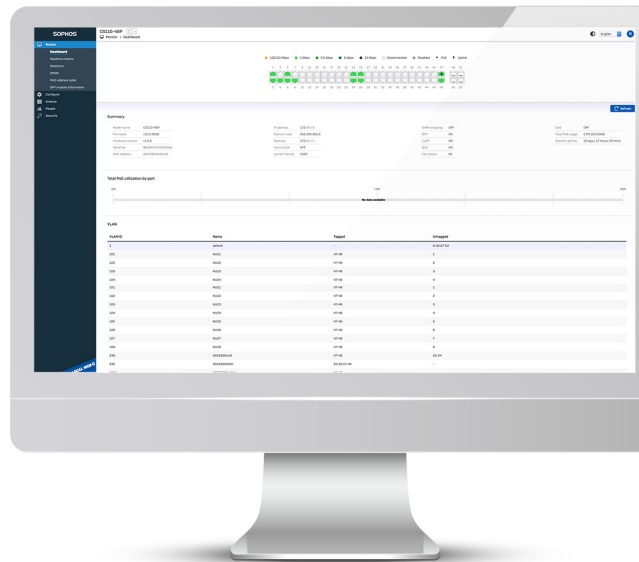
Sophos Switch – Model Overview

48-Port Switches

| | 100 Series | | | 200 Series |
|---------------------------------|---|---|---|---|
| Model | CS110-48 | CS110-48P | CS110-48FP | CS210-48FP |
| Hardware | | | | |
| Form Factor | 1U | 1U | 1U | 1U |
| Mounting | Rackmount | Rackmount | Rackmount | Rackmount |
| Technical Specifications | | | | |
| Switching Capacity (Gbps) | 176 | 176 | 176 | 224 |
| MAC Address Table | 32K | 32K | 32K | 32K |
| Packet Buffer Memory | 2 MB | 2 MB | 2 MB | 2 MB |
| VLANs | Support for up to 256 VLANs simultaneously (out of 4096 VLAN IDs) | Support for up to 256 VLANs simultaneously (out of 4096 VLAN IDs) | Support for up to 256 VLANs simultaneously (out of 4096 VLAN IDs) | Support for up to 256 VLANs simultaneously (out of 4096 VLAN IDs) |
| Network Interfaces | | | | |
| 10/100/1000Base-T | 48 | 48 | 48 | 32 |
| 100/1000Base-T/2500Base-T | - | - | - | 16 |
| SFP 1G | 0 | 0 | 0 | 0 |
| SFP+ 1G/10G | 4 | 4 | 4 | 4 |
| Other Interfaces | Console Port AC Power Socket | Console Port AC Power Socket | Console Port AC Power Socket | Console Port AC Power Socket |
| Power over Ethernet | | | | |
| Power Budget | n/a | 410W | 740W | 740W |
| PoE-capable Ports | n/a | 1 to 48 | 1 to 48 | 1 to 48 |
| Supported PoE Standard | n/a | 802.3af/802.3at | 802.3af/802.3at | 802.3af/802.3at |
| Max. PoE Devices | n/a | 26 (15.4W)/13 (30W) | 48 (15.4W)/24 (30W) | 48 (15.4W)/24 (30W) |



Sophos Central Management



Local Web Management

Sophos Switch Management

Sophos Central is the single point of truth for resellers, managed service providers, and customer admins. Whether you're managing a single switch or a large, distributed network deployment with multiple products, Sophos Central eases management and has all your other Sophos products just a click away.

You have the following options to manage your switches:

| | |
|---|--|
| <p style="text-align: center;">Sophos Central</p> <p style="text-align: center;">Single pane of glass for all your Sophos solutions. Limited configuration upon first release.</p> <p style="text-align: center;">Sophos Central management is included in the Support and Services subscription.</p> | <p style="text-align: center;">Local Web Management</p> <p style="text-align: center;">Access the full feature set and all configuration options of your switch from the very first release.</p> <p style="text-align: center;">Web management is included in the purchase price of your switch.</p> |
| <p style="text-align: center;">Command Line Interface (CLI)</p> <p style="text-align: center;">For network administrators who prefer to manage their switch via the Command Line Interface (CLI).</p> <p style="text-align: center;">CLI management is included in the purchase price of your switch.</p> | <p style="text-align: center;">SNMP</p> <p style="text-align: center;">The Simple Network Management Protocol is supported on all switches for management and monitoring.</p> <p style="text-align: center;">SNMP management is included in the purchase price of your switch.</p> |

How to Buy

| What You Purchase | What Your Purchase Includes |
|---|---|
| Sophos Switch Hardware | Sold per switch |
| Included in the hardware purchase cost | Local Web/CLI/SNMP management Limited lifetime warranty* replacement |
| Sophos Switch Support and Services | Sold per switch per year |
| Subscription entitles you to: | Sophos Central Management Advanced RMA support Phone support 24x7 Firmware updates |
| If subscription expires or is not purchased | Sophos Central management goes into read-only Firmware updates are not available No phone support No advanced RMA support |
| Important Note | Your Sophos Switch will always work via local configuration without a Support and Services subscription, however, with the above limitations. |

Further information about the limited lifetime warranty is available under sophos.com/legal.

Support access for Sophos Switch

Sophos support access can be activated for switches which are registered and connected to Sophos Central only. For switches not registered in Sophos Central, troubleshooting/debugging will be limited.

Sophos Switch – Software Features

| Management and Configuration | Feature Availability by Model |
|--|---|
| Switch Auto-Discovery | ✓ (all models) |
| Dynamic VLAN Configuration | ✓ [GVRP] - all models |
| IEEE 802.1D MAC Bridging/STP | ✓ (all models) |
| LAG group size (up to 8) | 8 - all models |
| Total Link Aggregation Groups (Up to # of ports) | 8 - all models |
| IGMP Snooping | ✓ (all models) |
| Static Routing | ✓ (all models) |
| 802.1x Authentication | ✓ (all models) |
| Syslog Collection | ✓ (all models) |
| IP/MAC ACL | ✓ (all models) |
| Jumbo Frames | ✓ [CS101-8/8FP: size 9K, per system setting] [other models: size 10K, per port setting] |
| Auto-negotiation for Port Speed and Duplex | ✓ (all models) |
| MDI/MDIX Auto-crossover | ✓ (all models) |
| IEEE 802.1D MAC Bridging/STP | ✓ (all models) |
| IEEE 802.1w Rapid Spanning Tree Protocol (RSTP) | ✓ (all models) |
| IEEE 802.1s Multiple Spanning Tree Protocol (MSTP) | ✓ (all models) |
| STP Root Guard | ✓ (all models) |
| STP BPDU Guard | ✓ (all models) |
| Edge Port / Port Fast | ✓ (all models) |
| IEEE 802.1Q VLAN Tagging | ✓ (all models) |
| Guest VLAN and Voice VLAN | ✓ (all models) |
| IEEE 802.3ad Link Aggregation with LACP | ✓ (all models) |
| Unicast/Multicast traffic balance over trunk port | ✓ (all models) |
| IEEE 802.1AX Link Aggregation | ✓ (all models) |
| Spanning Tree Instances (MSTP/CST) | ✓ (all models) |
| IEEE 802.3x Flow Control and Back-pressure | ✓ (all models) |
| IEEE 802.3 10Base-T | ✓ for 100 series only (not supported on 200 series) |
| IEEE 802.3u 100Base-TX | ✓ (all models) |
| IEEE 802.3z 1000Base-SX/LX | ✓ (all models) |
| IEEE 802.3ab 1000Base-T | ✓ (all models) |
| IEEE 802.3bz Gigabit Ethernet support | ✓ (all models) |
| IEEE 802.3 CSMA/CD Access Method and Physical Layer Specifications | ✓ (all models) |
| Storm Control | ✓ (all models) |
| Port Mirroring | ✓ (all models) |
| DHCP Relay | ✓ (all models) |

| Security and Visibility | Feature Availability by Model |
|--|----------------------------------|
| ACL - max. entries | Currently limited to 16 per port |
| IEEE 802.1x authentication Port-based | ✓ (all models) |
| IEEE 802.1x Authentication MAC Access Bypass (MAB) | ✓ (all models) |
| IEEE 802.1x Guest VLAN | ✓ (all models) |
| IEEE 802.1ab Link Layer Discovery Protocol (LLDP) | ✓ (all models) |
| IEEE 802.1ab LLDP-MED | ✓ LLDP MED on PoE models only |
| DHCP-Snooping | ✓ (all models) |
| Quality of Service | |
| IEEE 802.1p Based Priority Queuing | ✓ (all models) |
| IP TOS/DSCP Based Priority Queuing | ✓ (all models) |
| Management | |
| IPv4 and IPv6 Management IP assignment supports DHCP or Static address. Sophos defines default mode of operation | ✓ (all models) |
| SSH | ✓ (all models) |
| HTTPS | ✓ (all models) |
| SNMP v1/v2c/v3 | ✓ (all models) |
| SSH, Web Interface, and API | ✓ (all models) |
| Sophos Central | ✓ (all models) |
| RFC and MIB Support | |
| DHCP Client | ✓ (all models) |
| RFC 854 Telnet Server | ✓ (all models) |
| RFC 2865 RADIUS | ✓ (802.1X auth.) all models |
| RFC 1643 Ethernet-like Interface MIB | ✓ (all models) |
| RFC 1213 MIB-II | ✓ (all models) |
| RFC 1157 SNMPv1/v2c | ✓ (all models) |
| RFC 2618 RADIUS Authentication Client MIB | ✓ (all models) |
| RFC 1493 Bridge MIB | ✓ (all models) |

For further information,
please visit sophos.com/switch

United Kingdom and Worldwide Sales
Tel: +44 (0)8447 671131
Email: sales@sophos.com

North American Sales
Toll Free: 1-866-866-2802
Email: nasales@sophos.com

Australia and New Zealand Sales
Tel: +61 2 9409 9100
Email: sales@sophos.com.au

Asia Sales
Tel: +65 62244168
Email: salesasia@sophos.com